

T7406E Cordless Handset

Quick Installation Guide

You can download all documents referenced in this *Quick Installation Guide* at www.nortel.com

Before you start

- 1 Ensure that all the handsets you intend to configure have fully-charged battery packs installed.
- 2 Before you install the base station, ensure that
 - the TCM loops from your system are installed at the base station location
 - there is a power outlet within 1.5 meters (5 feet) of the base station location
 - the mounting bracket is removed from the base station if you intend to mount the base station on a wall or ceiling

Tools and materials

- 3 Before you install the base station, ensure that you have the following tools and package contents:

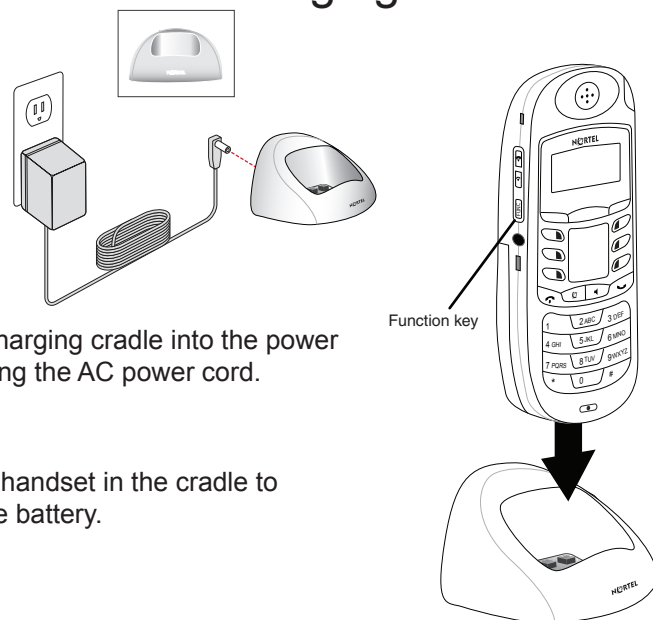
Tools

- Phillips or flat-head screwdriver, depending on the type of screws you have
- 2 screws
- pen or pencil

Package contents

- T7406E handset
- T7406E charging cradle and AC power cord
- T7406E base station and AC power cord
- cables to connect the base station to the TCM loops
- belt clip

Installing the handset charging cradle



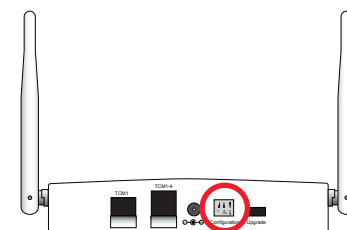
- 4 Plug the charging cradle into the power source using the AC power cord.

- 5 Place the handset in the cradle to charge the battery.

Setting the base station dip switches

- 6 Locate the base station dip switches at the back of the base station.

- 7 Set the dip switches to normal operating mode (from left to right: On, On, On).

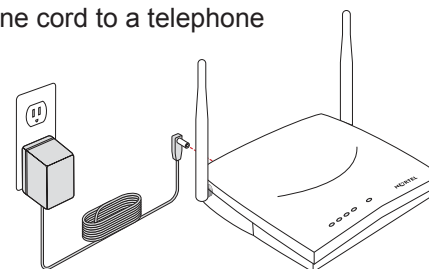


Connecting the TCM loop and power adapter to the base station

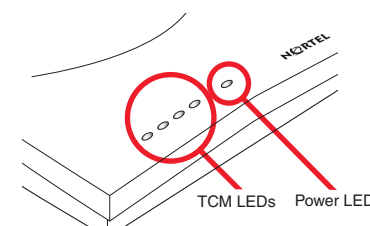
- 8 Connect one end of the line cord to the telephone jack on the base station labeled TCM1 if you are connecting only one handset, or TCM1–4 if you are connecting multiple handsets.

- 9 Connect the other end of the line cord to a telephone port on the system equipment.

- 10 Plug the base station into the power source using the AC power cord.



- 11 Check that the green power LED on the top of the base station is flashing to confirm that the base station is receiving power. If not, check that the power cable is correctly connected at either end.



Assigning a port ID to a handset

Note: You must assign a port ID (1, 2, 3, or 4) to a handset before you can register the handset. You can assign only one port ID to a handset that you registered to a particular base station. If you have two base stations, the port IDs of each set of four handsets can be 1, 2, 3, or 4. Each handset has a TCM dual-color (amber and green) LED on the base station that indicates that the TCM link for each handset is working.

- 12 When the phone is in standby mode, press the **Func** key.

- 13 Use the up and down keys to navigate to the Maintenance menu and press **Select**.

- 14 Use the number keys to enter the default maintenance password (000000). To correct an error in the password, press **Delete** to backspace.

- 15 Use the up and down keys to navigate to the Assign Port ID option and press **Select**.

- 16 Use the up and down keys to navigate to the port ID you want to assign (1, 2, 3, or 4) and press **Select** to save the new port ID for the handset.

Registering a handset

Note: Ensure that there are no TCM lines connected from the KSU to the base station when the base station is in registration mode, or when you are registering handsets with the base station.

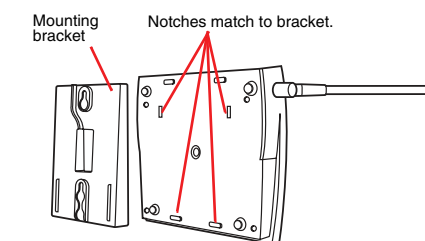
- 17 Remove the power cord from the back of the base station.
- 18 Set the dip switches at the back of the base station to registration mode (from left to right: On, On, Off).
- 19 Log into the Maintenance menu and navigate to the Registration option. Press **Select**.
- 20 Navigate to the Yes option and press **Select** to register the phone.
- 21 Plug the power source back into the base station. After 5 seconds, the base station enters registration mode, which is shown by the flashing power LED.
- 22 Place the handset near the base station. If you successfully registered the handset the Registered! message appears in the LCD. If you did not register the handset successfully, the Failed! Try Again! message appears. Repeat steps 17 through 23.
- 23 Repeat steps 12 through 23 for the remaining unregistered handsets.
- 24 When you are finished registering handsets with the base, set the switches to normal operation mode (from left to right: On, On, On).

Securing the base station mounting bracket

Note: It is optional to mount the base station on a wall or ceiling. You can also place the base station on a flat surface without using the mounting bracket.

Note: You must place base stations 8 feet off the floor and 10 meters apart.

- 25 Place the mounting bracket against the wall or ceiling where you want to install the base station.
- 26 Use the mounting bracket as a template to position the base station and to mark the screw positions.
- 27 Screw the two screws into the wall or ceiling.
- 28 Hang the mounting bracket from the screws and gently snap the base station onto the mounting bracket.



Changing the default maintenance menu password

- 29 To change the default password:
 - a. Log into the Maintenance menu using the default password (000000).
 - b. Use the up and down keys to navigate to the Change PSW option.
 - c. Press **Select**.
 - d. Enter the new password. The password must be six digits long.
 - e. Press **Select**.
 - f. Enter the new password again.
 - g. Press **Select**.
 The password is changed. The OK! message appears

NORTEL

N0140035

NN40110-302

Standard 01.01 June 2007

Copyright © Nortel Networks Limited 2007. All Rights Reserved